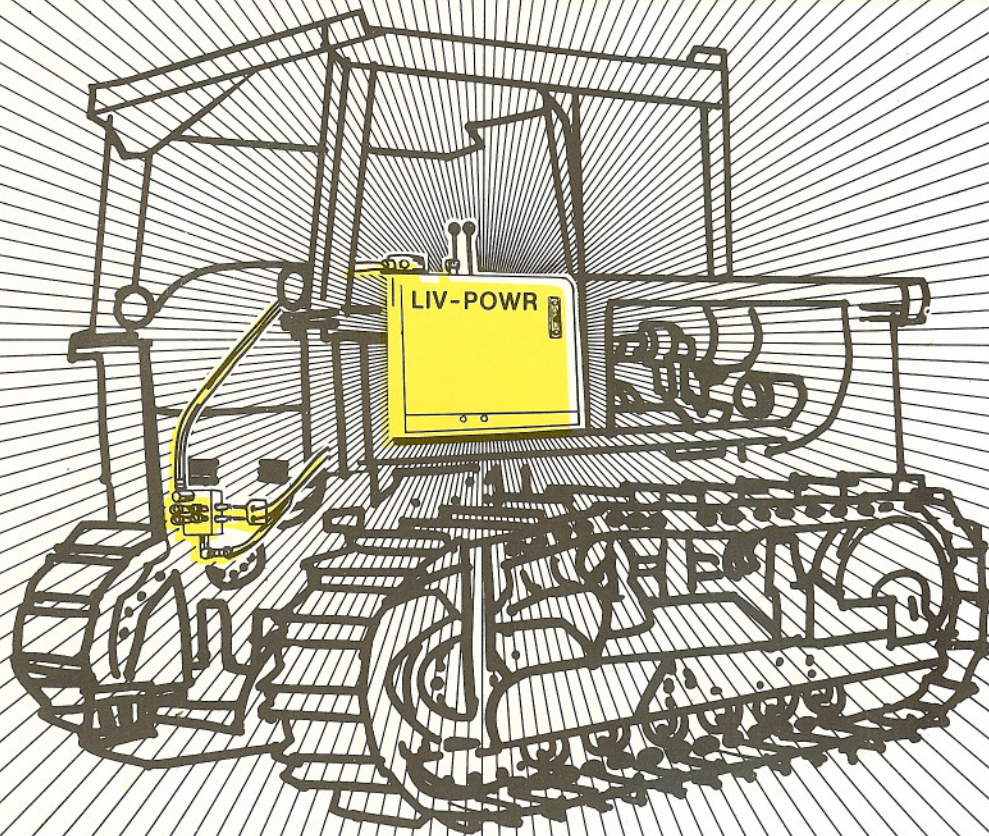


LIV-POWER



LIV-POWER is a "live" fluid power system designed for actuating agricultural and industrial implements pulled by crawler-type tractors.

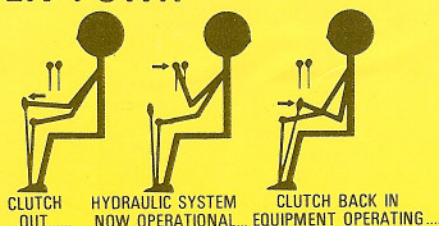
LIV-POWER'S reservoir is mounted to the side of the operator's seat to provide easy control access as well as excellent rear view visibility for hitching to implements.

LIV-POWER can save time when operating in tight spots because the pump power source bypasses the clutch assembly to provide continuous power at all times when the engine is running.

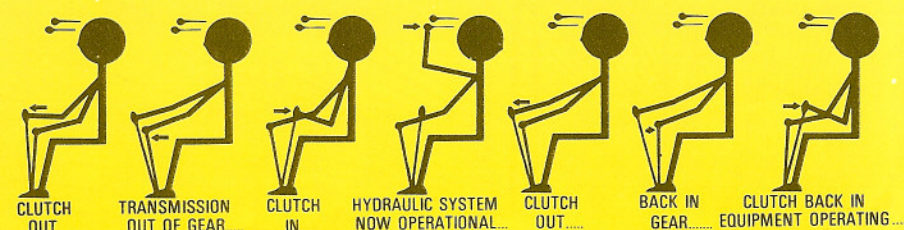
"Modern Fluid Power For Modern Needs"

**SAVE TIME IN TIGHT SPOTS...
..LIV-POWR IS ALWAYS READY!**

LIV-POWR



SAVE TIME CUT WEAR AND
TEAR ON EQUIPMENT IN EVERYDAY OPERATION
WITH LIV-POWR.....IT'S READY AND YOU'RE
BACK ON THE MOVE WHILE YOU'D STILL
BE SHIFTING WITH OTHER SYSTEMS!



OTHER SYSTEMS

GENERAL SPECIFICATIONS

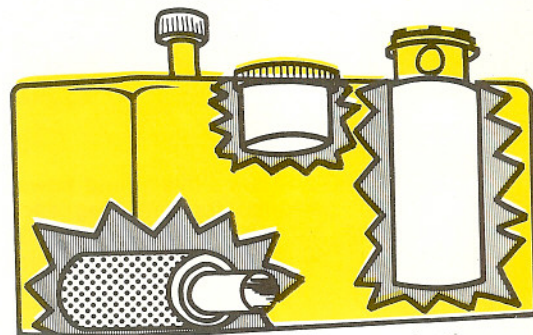
PUMP TYPE:	GEAR
PUMP CAPACITIES:	22.2-36 gpm
PRESSURE RANGE:	500-2000 psi
RESERVOIR OIL CAPACITIES:	21-36 gallons
RESERVOIR CONSTRUCTION:	HEAVY DUTY 10 GAUGE STEEL
RESERVOIR DESIGN:	CONTOURED TOP & DIE-FORMED ENDS
FILTRATION:	BREATHER-40 microns, SUCTION STRAINER-4 magnets, FILTER-10 microns (FULL FLOW RETURN LINE), FILL CAP SCREENS-40 microns and 70 mesh
CONTROL VALVE:	OPTIONAL STANDARD OR FLOAT TYPE

GENERAL CHARACTERISTICS OF LIV-POWR HYDRAULIC SYSTEMS

LIV-POWR is a fluid-power system designed for the transmission and control of hydraulic energy for actuating today's agricultural implements. The oil is stored in a large capacity reservoir designed with special baffling to insure proper cooling. The oil passes through a magnetic suction strainer before reaching the pump to filter out foreign particles.

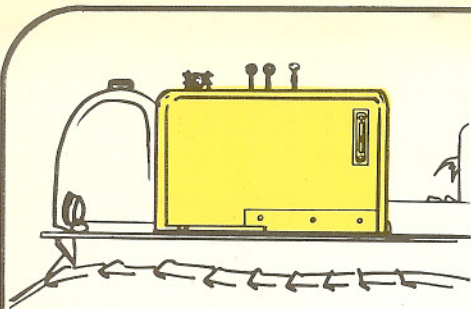
For the power source LIV-POWR uses a heavy duty gear-type pump, because its simplified construction gives it a better ability to stand up under rugged operation conditions. From the pump the oil is propelled through a high pressure hose to the control valving. The control valving directs the fluid energy to the desired work load and is responsive to the control handles placed at the operator's side.

Implement overload protection is an integral part of the valving unit, and can be easily set by screw adjustment. The oil returns to the reservoir through a full-flow filtration system to insure clean, lasting performance.

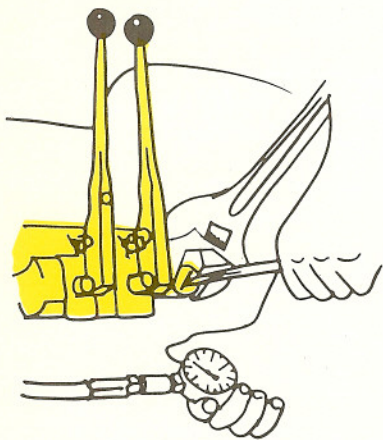


**"Modern Fluid
Power For
Modern Needs"**

LIV-P



**LARGE RESERVOIR
CAPACITY**

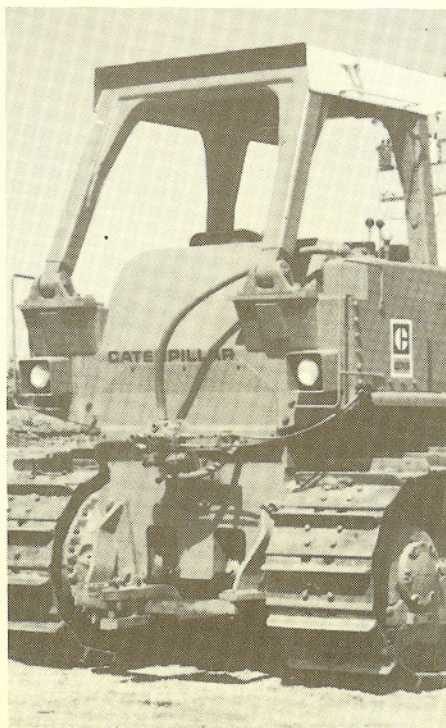


**EASY PRESSURE
ADJUSTMENT**



**LONG, EASY TO READ
OIL LEVEL
SIGHT GAUGE**

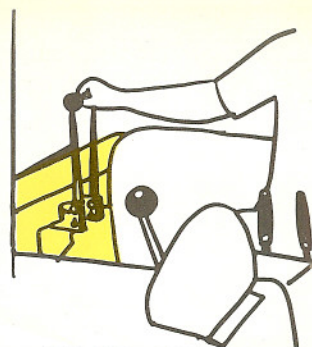
LIV-POWER FEATURES



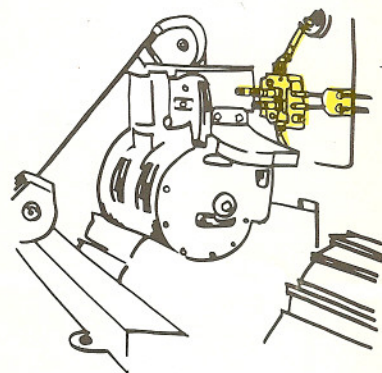
**EXCELLENT REAR
VIEW VISIBILITY**



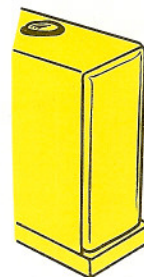
LARGE OIL FILL AREA



**EASY OPERATOR
CONTROL**



**CAN BE INSTALLED
WITH EXISTING
CABLE UNITS**



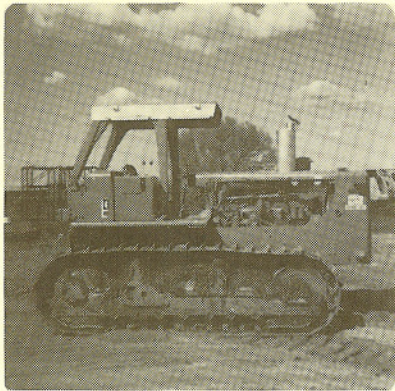
**PRECISION DIE-FORMED
RESERVOIR HEADS**

OWR

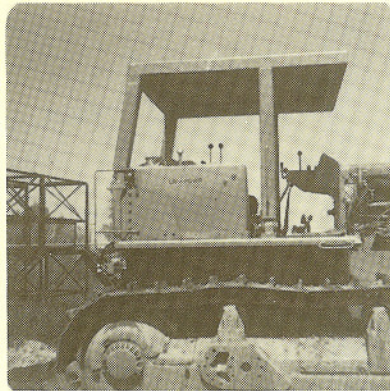


MACHINE WORKS

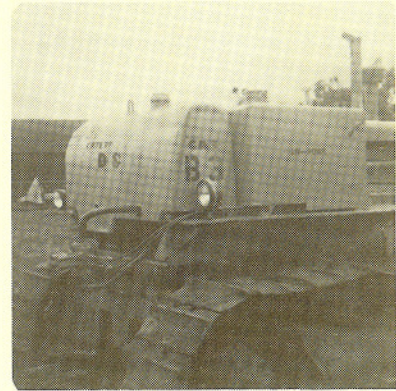
LIV-POWR FITS ALL THESE CRAWLERS....



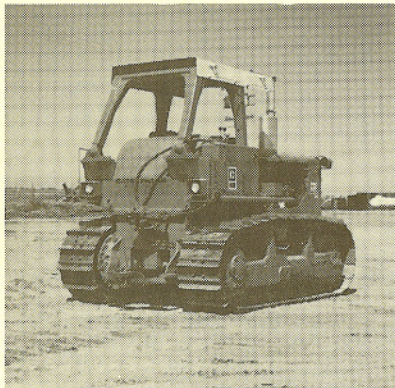
D 8 K



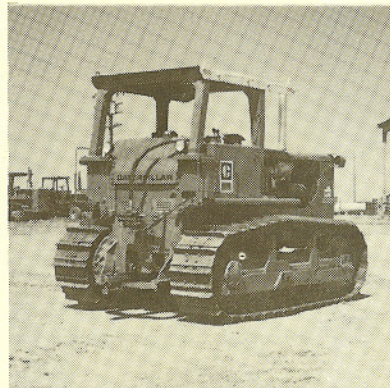
D 8 H



D 8 14A



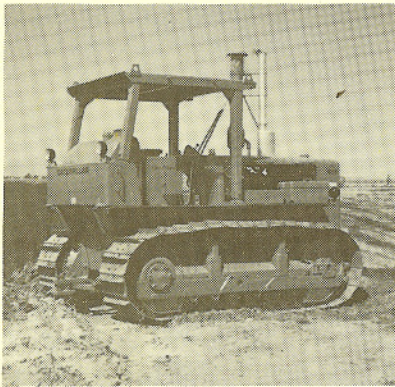
D 7 G



D 7 F

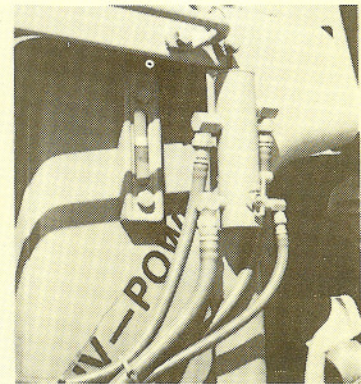


D 7 E



D 6 SA

**D 5SA & D 6SA
ADD-ON RESERVOIR**



HYDRAULIC SYSTEMS FOR AGRICULTURAL & INDUSTRIAL CRAWLERS

MACHINE WORKS

P.O. BOX 388 SO. DOS PALOS, CA. 93665 209-392-6103

DISTRIBUTED BY